



**ASSOCIATION FOR EARLY INTERVENTION**  
**annual report 2000**



# Mission and Goals of the Association for Early Intervention

**The Association for Early Intervention is a non-governmental organisation which provides professional services, support and assistance to families with young children with visual and also multiple disabilities.**

It offers parents (or legitimate representatives) a comprehensive range of services - information, support, therapies - which enable parents to become competent, independent, and responsible in the stimulation and education of their children during their early childhood.

The Association prefers home-based services - the family and child thus remain in the familiar environment of their community and do not need to be taken from their natural surroundings.

It has implemented the programme „GUIDANCE” aimed at the support for the whole family, promoting self-reliance and exploiting fully the potential and abilities of each individual.

**The Association was founded in November 1997 as a civic association for the management of the operation of Early Intervention Centres, which have been engaged in early intervention assistance since 1990.**

These Early Intervention Centres in Brno, České Budějovice, Liberec, Olomouc, Ostrava and Prague are regional centres for support of and guidance to families with children with visual and multiple disabilities. The centres create multidisciplinary teams that comprise both staff members and external expert collaborators who - along with the parents - seek and foster the most appropriate ways to stimulate the child, taking into account all specifics and the unique character of different families.

The Centres send their Early Intervention consultants to families all over the country. These consultants are responsible for counselling and coordination of support of individual clients in the region assigned to them.

In 1998 the Methodology Centre was established to coordinate and provide professional and expertise guidance to the Early Intervention Centres.

**The responsibilities of the Association also include the task of defending the rights of parents with children with disabilities, and efforts to work towards legislative changes that would give early intervention the status of a service and separate discipline.**

Therefore, in 2000 the Association cooperated with:

- medical centres and clinics so that continuous and smooth transition between different kinds of treatment could be ensured for the families and children. It is only by mutual collaboration that early diagnosis and efficient subsequent help can be achieved.
- client groups and client organisations. The Association protects their interests and helps them enforce their rights. The Early Intervention Centres serve as a platform for meetings of parents who can share their experiences and exchange their views.
- specialists from follow-on educational institutions (nursery schools, special education counselling centres, day-care facilities, the National Institute for the Deaf in the programme for deaf - blind children)
- early intervention providers abroad and international organisations of professionals. The International Council for the Education of the Visually Impaired - ICEVI, Perkins School for the Blind, Theofaan and Theofaan International - they have all contributed to the GUIDANCE programme by sharing information, providing supervision, staff training and financial support
- non-governmental organisations and social health services providers in an effort to improve the position of the non-governmental sector (SKOK), sharing expertise with The Diakonie Centre for Early Intervention, Child Centre Paprsek, Rehabilitation day-care facility DAR, etc.
- local administration in client's homes (Regional Authorities, Municipal Authorities, City Halls)
- state administration - the Ministry of Health of the Czech Republic, the Ministry of Work and Social Affairs and the Ministry of Education

## Organisational structure



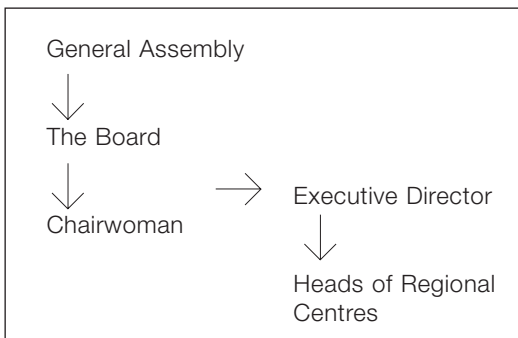
Chairwoman:  
*PaedDr. Jana Vachulová*

Supervisory Board:  
*Michal Voráček*  
*Věra Likešová*  
*Miroslav Petr*



Executive Director:  
*Mgr. Terezie Hradilková*

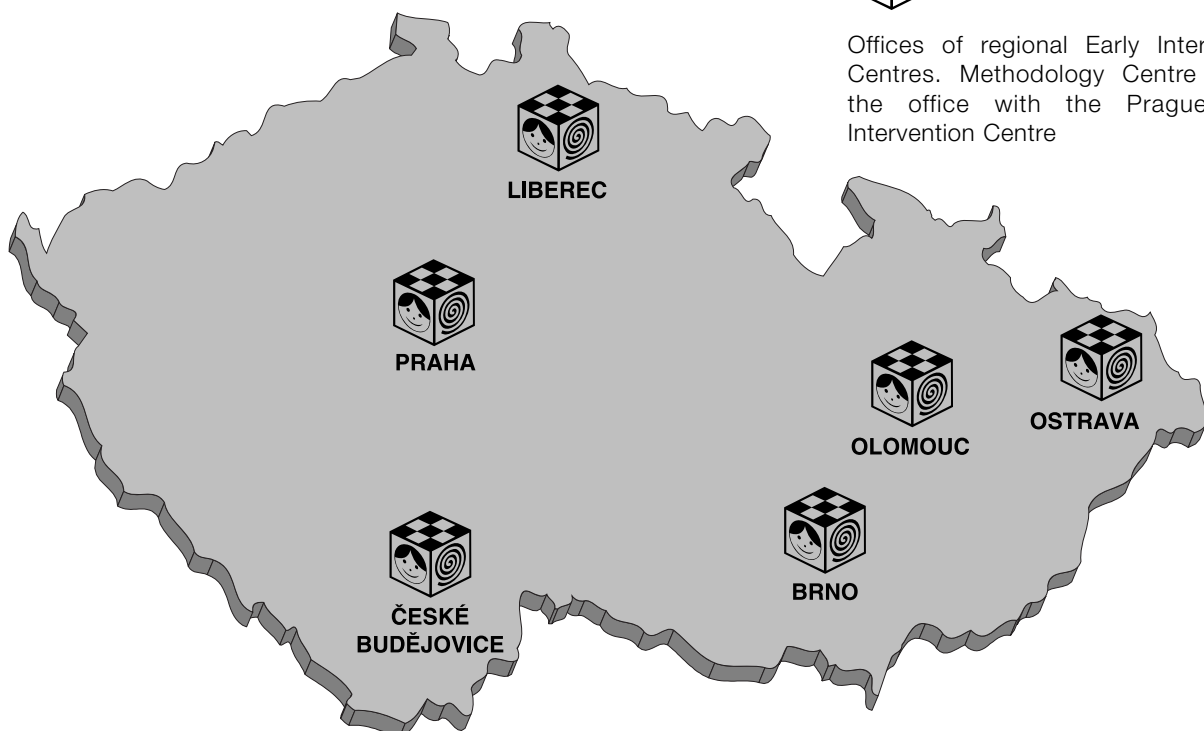
Honorary Board:  
*Martina Drijverová* - writer  
*Daniela Fischerová* - writer  
*Pavla Francová* - Olympic winner  
*prim. MUDr. Lumír Kantor* - neonatologist  
*Vladimír Michálek* - film director



## Regional Centres and Clients



Offices of regional Early Intervention Centres. Methodology Centre shares the office with the Prague Early Intervention Centre



# Report on activities in 2000

## **Clients:**

*The clients of the Association for Early Intervention are families (parents or legitimate representatives) of children with visual and multiple disabilities at an early age (i.e. from birth until 4 years of age, children with multiple disabilities until 7 years).*

<b>Overview of clients</b>	<b>Total</b>
Clients in 2000	468
- of whom with multiple disabilities	362
- of whom in institutions or other facilities	20
Clients - care started in 2000	132
Clients - care ended in 2000	74
Clients - who received one-time consultation	60
- of which paid	23

*In 2000, for the first time since the Association was established, the number of clients and their requests for assistance increased to such an extent that we had to put them on a waiting list.*

## **Services:**

*The standard range of services of all the Centres comprises consultations, family support, child development stimulation, integration, assistance in protection of rights and interests of the families, provision of information, and education and training.*

### Forms of services:

- field services: home-based **consultations in the families** are a key activity of the Early Intervention Centres. Specifically trained and educated professionals make regular calls on families with young children with visual impairments, and provide support and professional consultations to parents, while acting as their companions throughout the child's early education. The main advantage of consultations being provided in clients' homes as opposed to classic centre-based care is the fact that the child remains in his or her familiar environment, and therefore can easily open up, thus improving the efficiency of the whole process. This brings another advantage for the family - not having to do any unnecessary travelling, which is usually unpleasant and wearisome for the child.
- centre-based services (provided in the Early Intervention Centres): stimulation of vision, physiotherapy, occupational therapy, musical therapy, assistance of the psychologist
- lending of methodology materials, books, toys and special aids
- Rolnička („Jingle-bell”) magazine
- week-long rehabilitation courses for the families - in addition to a professionally managed workshops, this is the place where the parents can exchange views and information, share their experiences, and find support and understanding in one another
- support of the families in visiting professionals and institutions, in dealing with authorities, etc.

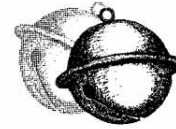
The regional Centres also offer (to the best of the extent of their means and staff abilities) certain therapies and interdisciplinary services, and to different extents they also support all independent and „do-it-yourself” activities of the families:

- home-based therapy (in families)
- centre-based therapy
- group meetings of families and organised visits
- complex overall analysis and assessment of the child's development and client's needs

<b>Overview of Services</b>	<b>Total</b>
Total number of early intervention consultants' home visits	1579
- of which with another professional	190
Total number of centre-based services in EI Centres	909
Total number of visits to institutions and facilities	54

# Rolnička (Jingle-bell) Magazine

Being well informed is a precondition of any successful partnership. Rolnička is a magazine published by Early Intervention Centres that both brings expert information from all areas of education of children with visual impairment, and serves as a platform for the exchange of parents' views and the sharing of their experiences. From the magazine, parents and professionals from institutions can learn about the activities of the individual Centres, about new aids and toys for their children, and can obtain recommendations and/or hints that might be helpful in their work, as well as information on legal and social implications. Published quarterly in Czech and Moravian versions, the magazine is financially supported mainly by parents and other subscribers.



**ROLNIČKA**  
ZPRAVODAJ PRO RODIČE

SPOLEČNOST PRO RANOU PĚČI  
VYDALO STŘEDNĚRO RANĚ PĚČE BRNO  
KARANTYNOVA 7, 602 00 BRNO  
TEL. 05 / 4123 6743  
E-MAIL: SRPBRNO@VULAVY.CZ

č.35, Březen 2001

## Obsah

ZVEME VÁS .....	2
INFORMACE .....	3
Kam za kultura? Do Olomouce.....	3
Lopatou i pobízáčem.....	3
Sřipky Z Liberce.....	3
PŘEDNÁŠKA .....	4
Integrace jako cesta.....	4
HRAČKY A POMŮCKY .....	5
Zajímavosti a drobnosti z obchodního domu IKEA.....	5
Nigad! Simulovny habčky.....	5
Pomůcka ke zrakové stimulaci.....	6
Indiánská šála.....	6
Veselé obrázky.....	6
ZAJÍMAVÉ ČLÁNKY.....	7
Taková běžná návštěva pana doktora.....	7
Jak pečovat o zuby u dětí s kombinovaným postižením.....	8
Už to máme doma! 10 věcí, které bychom dětem neměli říkat.....	9
Zrakové vnitřní.....	11
Mělková facilitace.....	14
Z RODIN.....	15
Zážitky z pobytu v Suchém u Beskovic.....	15
Úterky v Liberci.....	16
INZERCE.....	17
PODĚKOVÁNÍ.....	17

Strana 1

## Pomůcka ke zrakové stimulaci

Domácí výroba pomůcek je charakteristická především tím, že využívá věcí nepotřebných, které již přestaly sloužit svému účelu, ale jako hračky mohou vyhovovat naprosto skvěle. Patří mezi ně i použitá a tzv. ocděčka.



**Indiánská šála**  
Nejmenší děti, které z nějakého důvodu nevydrží dlouho v kočárku či v sedáčku a vyžadují častou pozornost svých rodičů i v době, kdy tyto mají doslova plné ruce práce, je možné nosit v tzv. indiánské šále. Výhodou oproti klasickým klokánkům a nosičkám je variabilita šály – dítětko můžete mít na zádech, na břiše nebo na svém boku. Je v polosedu nebo leží a přímo se vás dotýká.



Plánek na zhotovení a instrukce k širokému používání šály Vám na požádání zasle brněnské SRP.

Dagmar Jelínková

## Veselé obrázky

V knižkupectví jsem objevila brožurky (vydavatelství TOPP – lze je koupit i v knize na poliklinice ve FN Motol) s návodem, jak vyrobit obrázky na stěny a do oken. Zkusila jsem Maruše vyrobit ze čtvrtky panenku a moc se jí líbila. Polepila jsem ji samolepicími tapetami tak, aby byla výrazná. Další obrázky jsem dělala různě obtížné – vybarvené jen pastelkami, obtážené kontury fixami. Jejich velikost je 25-30 cm, což Maruše vyhovuje. Když jí obrázky ukazuji, vždy jí ke každému zvířátku nebo postavice zpívám písničku nebo říkanku, která se k nim vztahuje.

Časem jsem přišla na to, že bych mohla obrázky využít i jako hmatovou stimulaci a nalepovala jsem na obrázky třásně, vlnu, našivala korálky, masle, rolničky apod. Čtvrtka je však na takovéto úpravy slabá, tak doporučuji vyrábět z kartonu např. od krabic anebo alespoň dvě čtvrtky nalepit na sebe.

S Maruškou Vám přejeame hodně úspěchů a radosti při výrobě obrázků.

pani Brundátová



Strana 6

## Zajímavé články

### Taková běžná návštěva pana doktora..

K lékaři asi nikdo z nás nechodí s radostí, zvláště pokud se k němu vydáváme s naším malým potomkem. Ale co naplat, pravidelné kontroly je nutné absolvovat. Takže pro dlouhá čekání se tedy ohlíme trpělivostí, přihodíme něco na zub (zkušebníji počítají se všemi chody na celý den), shalíme několik oblíbených hraček a vyrazíme. Hlavou nám při cestě běží myšlenky, co asi tentokrát od pana doktora vlastně uslyšíme. Když se ale pak konečně ocitneme přímo v ordinaci, vše proběhne většinou tak rychle, že si stačíme pouze zapanovat, abychom se ukázali opět za pár měsíců. Odeházíme se zprávu v ruce a s počítáním promarněného času.

Dalo by se tedy na návštěvu lékaře připravit? Mohli bychom se dozvědět víc, než co vyčteme z nesrozumitelných pojmů v diagnóze či lékařova výrazu obličej?

Při návštěvě odborníka očního se k zodpovězení například nabízejí tyto otázky:

- Co je příčinou zrakových problémů dítěte? Jedná se o původ genetický nebo jsou příčinou okolnosti související s dobou těhotenství a porodu?
- Existují nějaké další problémy, které se k diagnóze mohou přidružit?
- Jak naše dítě vidí?
- Mohou pomoci brýle?
- Pokud ano, jak (při kterých činnostech) brýle nosit?
- Jak často je na brýle márné?
- Bylo by potřeba zabarvených skel?
- Je možné využít kontaktních čoček?
- Odpovídá počet dioptrií zrakové vadě?
- Co negativně ovlivňuje zrak?
- Jaké osvětlení by mohlo dítěti pomoci?
- Přisvícení lampičkou nebo spíše světlo tlumené?
- Jaká je možnost operace a vhodný věk pro její provedení?
- Co můžeme očekávat v budoucnu z hlediska prognózy? Zhoršení/zlepšení/stabilní stav?



Na tyto a mnohé další otázky, které Vás v souvislosti se zrakem dítěte napadají, máte jako rodiče právo, nebojte se je proto vyslovit. Dobře je, v klidu si myšlenky předem napsat na papír a před návštěvou pročit. Na některou z nich si jistě vzpomenete. V opačném případě se nabízejí inspirace ze scény jednoho českého filmu, kdy pacient předčítá své bolstky z pečlivě připraveného seznamu... Filmovou větu: "Tak co tam máš dál?" asi z úst svého lékaře neuslyšíte, ale to by Vás od dotazování nemělo odradit.

A také vězte, že užitečné mohou být i Vaše vlastní postřehy - tedy jak se dítě zrakově projevuje, jaké jsou jeho reakce na zrakové podněty. Proto se neostýchejte lékaři sdělit, co máte vyzporováno. Jako rodiče své dítě znáte nejlépe a jistě víte, co nejvíce zaujme jeho zrakovou pozornost, zda je citlivé na určitý druh světla, zda mu nečiní problémy v některé pozici udržet hlavu, jakým způsobem sahá po hračkách – ze strany nebo z přímého směru, a také jestli si například tře nebo tlačí očka. Všechny podobné informace totiž mohou pomoci lékařovi zrakově schopnosti Vašeho dítěte posoudit mnohem objektivněji, než co sám zjistí v průběhu vyšetření pomocí přístrojů.

### Zdroje:

- zahraniční materiál: „It's More Than A Flash Light“ (vydáno American Fundation For The Blind)
- diskuse rodičů o daném tématu na letošním pobytu v Čeladné (poznámky poskytl jedna ze zúčastněných maminek - *pani Richterová*)

Strana 7

## **Important events in 2000**

### **January**

study visit of early intervention workers from Croatia in Early Intervention Centre	Prague
Board of Association for Early Intervention meeting	Liberec
Meeting of parents with children with disabilities	Prague
Conference of Prague non-profit organisations in ICN	Prague

### **February**

„30 Days for Non-profit Sector”	
Meeting of families and musical therapy	Prague
Open-door day in all Early Intervention Centres	
Course „Instructor of Stimulation of Vision”	Prague
Meeting of representatives of regional non-governmental non-profit organisations	Liberec

### **March**

Course „Early Intervention Consultant” - theoretical part	Prague
Seminar „Team work” - lecturing	Prague
Seminar „I cannot see”	Ostrava

### **April**

Seminar for parents on vision and its stimulation „How does our child see?”	Prague
Supervision visit of Dennis Lolli from the foundation Hilton/Perkins International	Prague, Olomouc
Board of Association for Early Intervention meeting, meeting of Heads of Centres	Brno

### **May**

Week-long rehabilitation course for children with visual impairment, Czech region	Herlíkovice
Supervision visit of Dutch lecturers under Phare - LIEN project	Brno, Olomouc Ostrava
Ophthalmological conference - participation and talk	Litomyšl
Week-long rehabilitation course for families with children with multiple disabilities, Czech region	Herlíkovice

### **June**

Week-long rehabilitation course for children with visual impairment, Moravia region	Čeladná
Field-day meeting of the Prague Centre	Sv. Jan p. Skalou
Meeting of parents of children with disabilities	Prague

### **July**

European conference ICEVI „Krakow 2000” - delivering lectures	Krakow
---	--------

### **September**

Making film for the theme documentary „At our home”	Brno, Ústí n./Labem
Week-long rehabilitation course for children with multiple disabilities, Moravia region	Suchý u Boskovic
Conference „Integration” - participation	České Budějovice

### **October**

Seminar „Communicating with the child”, video-training of interactions method	Prague
Examination of the course „Early Intervention Consultant” participants	Prague
Week of mental health - we took part in organising	Olomouc
General Assembly of the Association for Early Intervention	Prague
Celebration of the 10th anniversary of the founding of Prague and Brno Early Intervention Centres	Prague

### **November**

Rehaprotex exhibition - our stand, presentation	Brno
Seminar of the team of all employees of the Association „Education”	Olomouc

### **December**

St. Nicolas gathering with presents	Brno
St. Nicolas	Ostrava, Liberec
St. Nicolas in the Divadlo v Dlouhé Theatre	Prague
Christmas gathering at the Maternity centre Máj	Č. Budějovice



## **Methodology Centre**

Director of the Association for Early Intervention: Mgr. Terezie Hradilková

Haštalská 27  
110 00 Praha 1  
tel.: (+42) 02/24 82 68 60, 24 82 68 57  
fax: (+42) 02/24 82 68 58  
e-mail: ranapece@brailnet.cz

Secretary: Silvia Senciová

Coordinator of project „Methodology and information centre”: Mgr. Kamila Marcinková

Coordinator of project „Programmes and legislation of Early Intervention in the Czech Republic and EU”: Bc. Alice Pexiederová

Assistant (doing his non-military Army service with us): Ing. Jan Otýpka

Advisory board of the director: methodology council includes experts from the Association for Early Intervention:

PaedDr. M. Skalická, methodologist of vision stimulation

Lucie Gregorová, methodologist of locomotive development

Mgr. Tímea Vidová, methodologist for support to parents

PaedDr. Jana Vachulová, methodologist for integration

The Methodology Centre coordinates executive and professional activities of the Early Intervention Centres and provides administrative, expert and information background in the way that the EI Centres can provide services throughout the Czech Republic on a level conforming to adopted standards and in line with the Regulations. It ensures and promotes further education of employees, and arranges courses and training. The Methodology Centre also enters into and maintains international contacts, presents the Association for Early Intervention both in the Czech Republic and abroad. It has created and now operates a library and prepares professional specialised materials for students, parents, employees and cooperating experts.

### **In 2000 we cooperated with the following international organisations:**

ICEVI

Eurlyaid

Hilton/Perkins International Program

### **We participated in the following international projects:**

Comenius Action 3.2. (Socrates Program)

Phare Lien-Tacis (European Commission programme)



# Regional Centres

## Early Intervention Centre Brno

Head of the Centre: Bc. Ivana Kudelová

Kabátňíkova 7  
602 00 Brno  
tel., fax: (+42) 05/41 23 67 43  
e-mail: srpbrno@volny.cz

The Centre ensured regular visits and consultations to the families of clients, centre-based stimulation of vision and centre-based consultations. It prepared the magazine Rolnička for parents in Moravia and Silesia. In the course of the year, a number of personnel changes were made. Thanks to a very welcoming approach of the administration officials of the city district Královo Pole, we managed to find new offices in Kabátňíkova street, where at the end of 2000 the Centre moved.

**Events for the clients:** The Brno Centre participated in two rehabilitation courses for families with children with disabilities. It organised the so-called Parents' Clubs, which provide the opportunity for parents to get together - during the year there were seven meetings. The last event in 2000 was a St. Nicolas gathering of families connected with the Czech tradition of the angel-devil gift custom.

**Events for the public:** The Centre promoted Early Intervention in the media - it had a programme on Czech Radio Brno, wrote an article in the newspaper Rovnost, and wrote articles about the Early Intervention Centre Brno in the local press issued by city districts Brno - Královo Pole and Brno - Račkovice. In the regional broadcasting of Czech Television Brno a spot on the work of the Centre was aired. The Centre's „open-door day” was organised in February.

**Our activities under the programme of „Informing the public”:** Delivery of a lecture on early intervention at a nation-wide conference „Family and day-care facility” in Karviná; participation in the making of the TV programme „Time for the Family”, shot partly at the rehabilitation course for families with visually impaired children. Presentation of early intervention at the events organised by the Brno Association of non-governmental non-profit organisations (BANNO) called BANNO-FÓRUM, working meeting of representatives of NNOs, etc. Active participation in the seminar by the Ministry of Education „Paths towards the up-bringing and education of children with special needs” (Czech-German project). Presentation of early intervention during the visit of Dutch experts in special schools and special education counselling centres (SPC) for children with visual impairment (part of Czech-Danish project, under the auspices of the Ministry of Education).

**Further education and training of our employees:** Completing the course „Crisis Intervention”, participation in a specialised seminar „Care of children with high-risk factors for development”, participation in the international conference „Importance of Therapies for Special Education Practice” in Brno. Also participation in the conference on the up-bringing and education of individuals with special needs in Olomouc and in the Regional social conference focused on accreditation of social services. Seminar completing the Phare-LIEN project, seminar of the Association for Early Intervention on rehabilitation/physiotherapy and Bobath's method.

### **In 2000 we cooperated with the following organisations and specialists**

Eye Clinic of the Faculty Hospital (= teaching hospital) for Children (FDN) in Brno - all doctors and medical staff, Department of Special Education of the Masaryk University in Brno, MUDr. J. Karásková - ophthalmologist, PhDr. M. Halířová - clinical psychologist, Mgr. Elena Sejrková - social psychologist, Mgr. Jahnová - clinical psychologist, representatives of NNO within BANNO, PaedDr. Konrádová - Tyfloservis Brno, Special Education Counselling Centre (SPC) for the visually impaired Brno and Zlín, SPC with Nursery school for the physically disabled Brno, SPC for mentally disabled Kyjov, Dr. Stěničková - director of special Nursery school at FDN Brno, students of the Faculty of Social Studies of the Masaryk University, Higher Education School of Social Studies, Higher Education School of Education in Svatý Jan pod Skalou.

### **And the following people also deserve our thanks and appreciation:**

Ing. Ivan Kopečný - Mayor of Brno-Královo Pole city district, PhDr. R. Svoboda and Mr. R. Pelán - members of Brno-Královo Pole city district administration, MUDr. Zdeňka Kafková - ophthalmologist, PaedDr. R. Konrádová - special teacher, Mgr. B. Soukupivá - special teacher, MUDr. Z. Prosková - head of health department of MMB, Ing. Adam - head of the social and culture department of MMB, Bc. Silvia Slámová - special teacher, our sponsors and our own tolerant and supportive families.

### **Overview of clients**

Total Clients in 2000	102
- of whom with multiple disabilities	72
- of whom in institutions or other facilities	4
Clients - care started in 2000	36
Clients - care ended in 2000	22
Clients - who received one-time consultation	4
- of which paid	0

### **Overview of Services**

Total number of early intervention consultants' home visits	254
- of which with another professional	90
Total number of centre-based services in the EI Centre	34
Total number of visits to institutions and facilities	7

# **Early Intervention Centre České Budějovice**

Head of the Centre: Mgr. Andrea Sitařová

Jizerská 4  
370 11 České Budějovice 2  
tel., fax: (+42) 038/552 00 88

Along with regular consultations of early intervention consultant and occupational therapist in clients' homes, the centre offered centre-based stimulation of vision, occupational therapy, consultations with a psychologist and reflexive synergy therapy. In the South-Bohemian centre it has become a tradition to organise get-togethers for families - summer meetings under the Kletř mountain, „Christmas party”, meetings of mothers and a psychologist. A great deal of energy was expended on solving the problem of the lack of space in the Centre's premises. At the end of 2000, the Municipal Authority of České Budějovice promised to give us new premises on the grounds of Jizerská nursery school.

**Events for the clients:** the Centre organised a Summer holiday gathering pod Kletř. The families who are or were clients meet up annually in a remote village of Bohouškovice in the middle of the nature reserve Blanský les with a view of the Kletř mountain. In the grass under the cherry tree we play, talk, swing on a swing, have a bath in a pool, or roast sausages over the fire but above all we are all enjoying it tremendously. Before Christmas, we prepared a „Christmas party” for our families and children at the Maternity Centre Máj, which we hired for the purpose. First we sang songs to music accompaniment from all children, then everyone lit up a sparkler and we gave presents from uncle Zhuzhu-Lido. We floated small boats made of walnut shells and children could decorate gingerbread with their parents. Each month the Centre organised a meeting of mothers with a psychologist. While the mothers were busy, there was a micro nursery school, organised with the help of the students of the Health-Social faculty of the South Bohemian University.

**Events for the public:** In February, as part of a campaign „30 Days for Non-profit Sector”, the Centre held an „open-door day”. In the same way as others are trying to help our Centre, we too decided to help - we organised a collection and we gave the proceeds to the account of the Help the Children foundation. A Benefit concert was organised by the Rotary Club in association with the South Bohemian chamber philharmonic orchestra. The proceeds from this concert were donated to equip a special room for vision stimulation.

**Staff training:** In 2000, our Centre's consultants successfully completed the course „Early Intervention Consultant” and the course of Instructor of the stimulation of vision. In September, our centre took an active part in the conference on integration held in České Budějovice.

## **In 2000 we cooperated with the following organisations and specialists:**

SPC for the visually impaired, ČB, Mrs. Dufková

SPC affiliated with the facility for the hearing impaired, ČB, Mrs. Samohejlová

SPC for the mentally retarded, ČB

Day-care facility Rolnička in Soběslav, Mrs. Dejmková

Rehabilitation creche, ČB, Mrs. Nagyová

DÚSP Černovice

Arpida ČB

Health and Social faculty of the South Bohemia University, Doc. MUDr. M. Velemínský, CSc.

MUDr. V. Kostohryzová

MUDr. A. Zabanová

MUDr. M. Hanzl

## **We would like to thank our friends, supporters and sponsors for support and help:**

We thank UPC Czech Republic, a.s. for their financial donation, which we used to purchase a special aid used in the stimulation of vision. We also thank the Municipal Authority of České Budějovice for supporting our activities in the region, and Rotary Club České Budějovice for the financial donation used to equip a special room for the stimulation of vision.

## **Overview of clients**

Total

Total Clients in 2000	47
- of whom with multiple disabilities	40
Clients - care started in 2000	12
Clients - care ended in 2000	7
Clients - who received one-time consultation	12
non-clients who received one-time consultation	9
- of which paid	0

## **Overview of Services**

Total

Total number of early intervention consultants' home visits	211
- of which with another professional	25
Total number of centre-based services in the EI Centre	39
Total number of visits to institutions and facilities	2

## **Early Intervention Centre Liberec**

Head of the Centre: Paed. Alexandra Bečvářová    Náměstí E. Beneše 22  
460 01 Liberec 1  
tel., fax: (+42) 048/510 95 64  
e-mail : srp@pvtnet.cz

In addition to its regular field services that reach as far as up to a 150 km range, the Early Intervention Centre in Liberec enables the families and their children to attend a number of centre-based programmes that are focused on the support of both the child and the family.

These programmes include: 1) stimulation of locomotion and consultation on the possibilities of motor development in children with visual or multiple disabilities, 2) stimulation of vision and computer-aided visual training using special software, 3) occupational therapy, 4) parent groups - regular meetings of parents with a psychologist.

**Events for the clients:** before Christmas, the Centre hosted a gathering of families around a Christmas tree, with St. Nicolas giving out presents and an Art workshop for children; regular gatherings of families with children with multiple and visual impairment were also organised. The Centre played a part in the preparation and implementation of two courses for the parents of children with visual and multiple disabilities in Bohemia.

**Events for the public:** As a presentation of its activities, the Liberec Early Intervention Centre organised an open-door day connected with the presentation of the project called Guidance, realised with support from the SWIF-PHARE fund and showing a video documenting field and centre-based services of the Centre. Along with the general public, the event was attended by the senior representatives of the city headed by the Mayor Ing. Jiří Kittner, representatives of surrounding towns and the representatives of the National Education Fund.

**Education and Informing the public:** The Centre provides professional consultations to educational or health workers in regular and special nursery schools, day-care facilities and special education counselling centres.

On a regional level, the consultants participated in the community meetings of representatives of non-governmental non-profit organisations (NNO). The Centre takes an active part in organising events of these organisations, and within its activities in the Commission for Civic Initiatives and the Health Commission of the Liberec Town Council it aims at asserting the interests of the civic sector.

The centre's staff participated in implementing the project Centre for civic initiatives, which should contribute to the development of NNOs in the Liberec region and their communication with the public and state administration. As far as training is concerned, our consultants attended the course Early Intervention Consultant and the course Instructor of Vision Stimulation.

### **In 2000 we cooperated with the following organisations and specialists:**

Faculty of Education of the Technical University in Liberec

### **We would like to thank:**

District Authority Liberec and everybody who helps us financially to carry out the project „Guidance”.  
Okresnímu úřadu Liberec a všem, kteří nám svými finančními příspěvky pomáhají realizovat projekt Provázení.

### **Overview of clients**

Total	
Total Clients in 2000	59
- of whom with multiple disabilities	51
Clients - care started in 2000	13
Clients - care ended in 2000	7
Clients - who received one-time consultation	0
non-clients who received one-time consultation	0
- of which paid	0

### **Overview of Services**

Total	
Total number of early intervention consultants' home visits	299
- stimulation of vision of children in families	250
Total number of centre-based services in EI Centre	
- individual centre-based programmes	48
- consultations regarding locomotion development and locomotion stimulation	128
- stimulation of vision and vision training	290
- mothers groups	62

## **Early Intervention Centre Olomouc**

Head of the Centre: Mgr. Dagmar Krutilová

Dolní náměstí 38  
770 00 Olomouc  
tel/fax: (+42) 068/522 29 21  
e-mail: srp-ol@volny.cz

Besides regular home-based consultations in the families and centre-based vision stimulation, the Early Intervention Centre in Olomouc provided functional assessment of vision, and lent toys to homes. The Centre's employees also ensured the distribution of the Rolnička magazine. The Centre is very active in regional civic activities and educational programmes.

**Events for the clients:** Rehabilitation courses for parents with children with multiple disabilities

**Events for the public and Informing the public:** The Centre presented lectures on early intervention in Bata Hospital and Children's Centre Zlín, welcomed students of the faculty of education of Palackého University, organised an open-door day and gave a lecture on early intervention for the event called Month for Civic Sector.

**Staff training and education:** One of our consultants attended the course Early Intervention Consultant as well as a crisis intervention course and completed an educational programme „Island of the family: Integration approach for work with the family”.

### **In 2000 we cooperated with the following organisations and specialists:**

Teaching Hospital in Olomouc - neonatal department

Bata Hospital in Zlín - neonatal department

SPC, Zlín

SPC, Litovel

SPC, Brno

MÚ Olomouc - social department

Tyfoservis, Olomouc

Tyflopomůcky, Olomouc

Digitalizační centrum, Olomouc

P - centrum, Olomouc

civic association SPOLU, Olomouc

### **We would like to thank:**

Carpenter workshop of P-centre Olomouc, MUDr. Petr Hrubeš, REDA Ltd. Zlín, UPC ČR, OÚ (local authority) Žalkovice, OÚ Trnávka, OÚ Lešany, OÚ Mikulovice, OÚ Staré Město, OÚ Černá Voda, OÚ Čechy pod Kosířem, OÚ Náklo, MÚ (municipal authority) Olomouc - department of social affairs and health, MÚ Přerov, MÚ Hranice, MÚ Zlín, MÚ Vsetín, MÚ Prostějov, MÚ Litomyšl, Foundation Dětský mozek (Child's Brain)

### **Overview of clients**

Total

Total Clients in 2000	60
- of whom with multiple disabilities	59
- of whom in institutions or other facilities	2
Clients - care started in 2000	15
Clients - care ended in 2000	4
Clients - who received one-time consultation	0
- of which paid	0

### **Overview of Services**

Total

Total number of early intervention consultants' home visits	180
- of which with another professional	14
Total number of centre-based services in the EI Centre	81
Total number of visits to institutions and facilities	14

## **Early Intervention Centre Ostrava**

Head of the Centre: Mgr. Martina Billová

Nádražní 110  
702 00 Moravská Ostrava  
tel., fax: (+42) 069/611 24 73  
e-mail: srpostrava@volny.cz

In addition to regular visits to the families, the Ostrava Centre has the most comprehensive programme of centre-based stimulation of vision. The Centre organised a week-long rehabilitation course for families with children with visual impairment in Čeladná.

**Events for the clients:** Apart from this course, the Centre gave lectures for parents and organised their mutual meetings (called „Four o'clock Tea“), prepared a seminar on vision stimulation with making of aids and a traditional St. Nicolas party. It also took part in publishing the magazine Rolnička.

**Events for the public; activities under the programme „Informing the public“:** Within the event „30 Days for Non-profit Sector“ an open-door day was held, followed by two seminars called „I cannot see“ as well as a seminar about a computer programme „Médá“ (lit. Little Bear) for children with visual impairment. The Centre presented its work at the exhibition Medica Moravia in Ostrava and at the exhibition Rehaprotex in Brno. The Centre also maintains good cooperation with the department of social work of the Philosophical Faculty of the OU Ostrava and Integrated Secondary School Phare and a Higher Education Nursing School. The Centre also presented itself in the event for the support of the „Help the Children“ campaign in cooperation with NROS and Czech Television.

**Staff training and education:** Selected consultants attended the course „Instructor of Visual Stimulation“, completed the course „Early Intervention Consultant“, and took part in a course on massage for children.

**In 2000 we cooperated with the following organisations and specialists:**

MUDr. L. Webrová - FNsP - eye dept., consulting clinic for premature infants

senior doctor S. Horáková - department for children with vision defects

senior doctor I. Chmelová - Children rehabilitation day-care facility

SPC Kpt. Vajdy, Ostrava - Zábřeh

SPC for the visually impaired, Opava

SPC affiliated with the special nursery school for children with multiple disabilities, Frýdek-Místek

SPC affiliated with the DC for children with multiple disabilities, Nový Jičín

Canis-therapy Society, North Moravian section, Frýdek-Místek

**We thank:**

the students of Higher Education Nursing School and Integrated Secondary School Phare

### **Overview of clients**

Total

Clients in 2000	60
- of whom with multiple disabilities	53
- of whom in institutions or other facilities	2
Clients - care started in 2000	21
Clients - care ended in 2000	6
Clients - who received one-time consultation	6
- of which paid	2

### **Overview of Services**

Total

Total number of early intervention consultants' home visits	168
- of which with another professional	10
Total number of centre-based services in EI Centre	61
Total number of visits to institutions and facilities	7
Events for parents	
- summer rehab. course for parents and children with disabilities	1
- meetings for parents (Four o'clock Tea)	12

## **Early Intervention Centre, Praha**

Head of the Centre: Mgr. Helena Janoušová

(since October temporarily: Mgr. Tímea Vidová)

Haštalská 27

110 00 Praha 1

Czech Republic

tel.: (+42) 02/24 82 68 60, 24 82 68 57

fax: (+42) 02/24 82 68 58

e-mail: ranapece@brailnet.cz

The Centre in Prague is - in terms of the scope - the largest of all the regional centres. In addition to the standard range of services offered, it can, thanks to its multidisciplinary staff, offer the clients other types of services, ranging from physiotherapist consultations, to psychological advice, to centre-based stimulation of vision, to a complex assessment of the child's development.

It devised and published three issues of the magazine for the parents - Rolnička.

**Events for the clients:** Among the services offered by the Early Intervention Centre in Prague were regular monthly meetings of families in the centre, where we prepared programmes for both parents and their children. In the Spring there was a seminar for parents on stimulation of vision with a guest MUDr. Anna Zobanová. In the Autumn there was a seminar about using video training of interactions led by Mgr. Eliška Rothová. On the 3 December we again welcomed St. Nicolas accompanied by his usual crew - this was in the Divadlo v Dlouhé Theatre.

**Events for the public:** In the Spring our Centre, along with the Methodology Centre, organised a course „Early Intervention Consultant” for specialists from our organisation and from other early intervention providers. At the end of the course, in the Autumn 2000, the trainees took examinations. In February, the Centre organised an open-door day, during which the Centre presented its activities to the public.

In the Spring, 5 of our colleagues from Croatia came on a study visit. In the course of the whole year the course „Instructor of vision stimulation” was in progress under the project LIEN of the European Commission for workers of the whole network of our centres in cooperation with our colleagues from Theofaan, the Dutch early intervention provider.

Our Centre's employees organised a seminar for 20 persons from the Integration centre Zahrada (lit. Garden) in Prague. On 22 October we celebrated the 10th anniversary of the founding of the Prague and Brno Early Intervention Centres. The celebration took place in the Divadlo v Dlouhé Theatre and provided an opportunity for the meeting of current and past clients, centres' staff, supporters and sponsors. Some former clients performed their own music programme, songs or poems. We got a present - audio tapes with recordings of bedtime stories O pejskovi a kočička (Stories About Doggie and Kitty) created by Theatre Academy students and their teachers. A week later there was a press conference about this occasion.

### **Staff training and education and Informing the public**

In the summer and the autumn of 2000, a supervision of our team was done. The supervisor was Mgr. Milan Caha. As part of the informational and educational activities, the staff of our centre gave speeches at the Ophthalmology Symposium (May, Litomyšl), Clinical Psychology Day on Early Intervention; they also lectured at the course „Early Intervention Consultant”. They delivered lectures at the ICEVI conference in Krakow, at the seminar for the Federation of the Deaf, and to post-graduate psychology students. They also worked as teachers at the Higher Education School (VOŠ) of Education in Sv. Jan pod Skalou, provided places for and assisted with the work experience of students of VOŠ Jabok, VOŠ of Education in Sv. Jan pod Skalou and the Department of Special Education at Charles University. They wrote professional articles for magazines such as Social Policy, Czech Eye Optics, and others. Some of our consultants completed a course on crisis intervention, further psychotherapy training or participated in a seminar on stimulation of vision in early intervention (Socrates-Comenius Eringefeld). The staff also participated in seminars on orofacial stimulation, seminars for consultants in the E. Rohetz Centre, Bobath's method, and in the postgraduate education of physiotherapists.

### **In 2000 we cooperated with the following organisations and specialists:**

MUDr. Anna Zobanová, private eye office , Policlinic Barrandov

The Centre for Early Intervention of the Czech Protestant Church Diakonie

Children's Eye Clinic and the Centre for Eye Defects, University Hospital Motol

Divadlo v Dlouhé Theatre, Praha

SPC affiliated with the Special schools for the visually impaired, nám. Míru 19, Praha 2

SPC affiliated with the Special schools for the visually impaired, Loretánská 19, Praha 1

SPC affiliated with the Nursery school for children with visual impairment, Horáčkova, Praha 4

SPC for children with disabilities, Plzeň

SPC for the visually impaired, Hradec Králové

Faculty of Education of Charles University, Department of Special Education

Jabok - Higher Social Education and Theology School, Praha 2

Higher School of Education, Svatý Jan pod Skalou

Rehabilitation Day-care Centre DAR, Praha 6

Institute for the Deaf, Beroun

Children's Centre Paprsek, Praha 9

Association of the Parents and Friends of the Visually Impaired, Praha 1

Integration Centre Zahrada, Praha 3, and many others.

### **We wish to thank the following people for their financial support, voluntary work or donations:**

Members of the Rotary Club Staré Město for their year-round support of our Centre and their interest in our work, Mr. Podzimek from Thomson, Mr. Čech for his careful maintenance of our company car Felicia, the plumbing firm Mašek, firm Era Pardubice, ing. Jindřich Bass, Petr Kubisz, Richard Tůma, Allianz insurance company, firm Šmíd and co. , Banquet Catering, Jarka Janíčková, students of the Department of Drama of the Theatre Academy and VOŠ J. Ježka, teachers Lenka Fišerová and Jan Svěrák, municipal and local authorities, and other organisations and foundations that supported our projects in 2000.

### **Overview of clients**

Total	
Clients in 2000	140
- of whom with multiple disabilities	87
- of whom in institutions or other facilities	12
Clients - care started in 2000	35
Clients - care ended in 2000	28
One-time consultation provided to persons who are not clients	29
- of which paid	21

### **Overview of Services**

Total	
Total number of early intervention consultants' home visits	467
- of which with another professional	51
Total number of centre-based services in the EI Centre	166
- complex overall assessment	56
- stimulation of vision	70
- rehabilitation	40
- meetings of families	10
Total number of visits to institutions and facilities	24

### **Středisko rané péče Praha**

centrum pro podporu a provázení rodin dětí se zrakovým a kombinovaným postižením  
Haštalská 27, Praha 1, tel.:02/24 82 68 60  
zve všechny, kdo k nám chtějí nahlédnout, příznivce, přátele a sousedy, na

## **DEN OTEVŘENÝCH DVEŘÍ**

v úterý 22. února 2000



30 DNÍ PRO  
OBČANSKÝ SEKTOR

<b>Program:</b>	<b>1. blok:</b>	<b>2. blok:</b>
Terénní služby pro rodiny dětí se zrakovým a kombinovaným postižením (prezentace činnosti Střediska rané péče Praha slovem, písmem, obrazem)	9:30	14:00
Z porodnice domů (možnosti rehabilitace a stimulace dětí v raném věku)	10:00	14:30
Jak se učí děti vidět (program zrakové stimulace, speciální pomůcky, techniky funkčního vyšetření zraku)	10:30	15:00
Co dokáží vidět ruce (dílna - prohlížení, výroba, prodej hraček pro děti se zrakovým a kombinovaným postižením, tyflografika)	11:00	15:30
Proč podporuji občanský sektor (setkání přátel, příznivců, sponzorů a dobrovolných spolupracovníků Střediska rané péče Praha, hosté: režisér Vladimír Michálek a další členové rady Společnosti pro ranou péči)		18:00



# Employees

## The team of the Association for Early Intervention is comprised of:

The clients, early intervention consultants, instructors for vision stimulation, social workers, coordinators of services and projects, director, financial officer, secretary, workers doing civil (non-military) service, cleaners, professional guarantors, cooperating specialists and therapists and volunteers.

## Our employees in 2000:

Mgr. Radka Babiánková, PaedDr. Alexandra Bečvářová, Monika Bečvářová, Mgr. Martina Billová, Eva Brabcová, Filip Čada, Mgr. Šárka Čermáková, Lucie Gregorová, Magda Groscheová, Mgr. Terezie Hradilková, Ivana Janků, Mgr. Helena Janoušová, Dagmar Jelínková, Mgr. Naďa Jiříčková, DiS. Eva Kohlenbergerová, DiS. Hana Kosová, Mgr. Dagmar Krutilová, Bc. Ivana Kudelová, Kateřina Kudelová, Jarmila Kuchařová, Ing. Věra Likešová, DiS. Jana Lukejová, Monika Němcová, Bc. Olga Parkanová, Mgr. Pavla Perglová, Miroslav Petr, Iveta Petrová, Bc. Alice Pexiederová, Bc. Pavla Pulkrábková, Alžběta Saláková, Silvia Senciová, Mgr. Andrea Sitařová, PaedDr. Markéta Skalická, Mgr. Zita Sýkorová, Mgr. Jana Šimová, Mgr. Martina Šmahová, Jana Štindlová, Mgr. Jana Tušlová, PaedDr. Jana Vachulová, Mgr. Tímea Vidová, Mgr. Hana Volná, Mgr. Jiří Votava, Eva Votavová, Jaroslav Zaoral

## Expertise guarantors:

MUDr. Marie Holoušková, Prim. MUDr. Lumír Kantor, PhDr. Dana Němcová, Prim. MUDr. Stanislav Rodný, MUDr. Zuzana Válková CSc., Prof. MUDr. Miloš Velemínský CSc., MUDr. Anna Zobanová

## In civil (non-military) service:

Ing. Jan Otýpka and Jan Petr in Prague and Ing. Miloš Sotona in Liberec

## The Association had a long-term cooperation work contracts with:

Ivan Doležal, Emilie Holá, Lenka Nagyová, Jana Nikodýmová, Ing. Miroslav Polák, Mgr. Pavlína Prymusová, Mgr. Martin Šrámek

## Special thanks:

to Ing. Miroslav Polák as he has been handling the payroll and personnel agenda of our organisation for 4 years now in a very conscientious and accurate way

## Overview of employees of the Association for Early Intervention in 2000:

<b>Early Intervention Centre</b>	<b>number of employees</b>	<b>full-time equivalent</b>
Early Intervention Centre	<b>3</b>	<b>2</b>
Praha	<b>10</b>	<b>8,8</b>
Č. Budějovice	<b>3</b>	<b>1,8</b>
Liberec	<b>4</b>	<b>2,4</b>
Brno	<b>4</b>	<b>3,8</b>
Olomouc	<b>4</b>	<b>3,1</b>
Ostrava	<b>3</b>	<b>2,6</b>
<b>TOTAL</b>	<b>32</b>	<b>24,6</b>

# Financial report

In accordance with Act No. 563/1991 Coll. on Accounting, our organisation maintains a double-entry accounting. The Organisation Office Praha conducted an audit of financial funds granted by the Ministry of Health in 2000; for details please see the „Auditor’s Report No. 701/2001 on the financial statements for the year ended December 31, 2000” dated January 29, 2001.

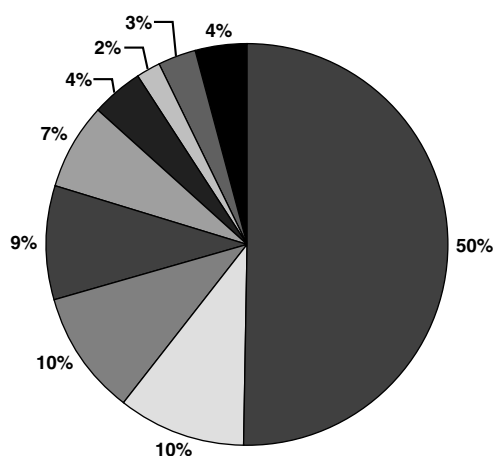
Following the requirement of the Ministry of Work and Social Affairs, all our accounts for 2000 are now being audited; the audit is to end on June 30, 2001. We use many different sources to finance the operation of the Association. The structure of costs and revenues and respective amounts are seen in the following tables and charts.

<b>Structure of revenues (in thous. CZK)</b>		
State subsidies	4909	50,3 %
Ministry of Health (MZ)	3968	
Ministry of Work and Social Affairs (MPSV)	901	
Ministry of Education (MŠMT)	40	
Contributions from local administration	998	10,4 %
Contributions from Czech foundations	931	9,5 %
Contributions from firms	885	9,0 %
Contributions from Phare	728	7,5 %
Contributions from foreign foundations	388	4,1 %
Contributions from individuals	187	2,0 %
Revenues from own secondary business activities (consultations, seminars, advertising, magazine Rolnička, petty sales)	305	3,0 %
Revenues from clients for rehab. courses	121	1,2 %
Reimbursements (e.g. from insurance companies)	131	1,3 %
Interests	72	0,7 %
Extraordinary revenues	66	0,6 %
Revenues from sales of tangible assets	38	0,4 %
Membership fees	4	0 %
<b>TOTAL</b>	<b>9763</b>	<b>100 %</b>

<b>Structure of costs (in thous. CZK)</b>		
Wages and salaries	3909	40,0 %
Services	1357	14,0 %
Mandatory social and health insurance	1143	12,0 %
Consumption of material (incl. petrol)	914	9,4 %
Depreciation	843	8,6 %
Costs relating to Lien project supervisors	596	6,1 %
Travel expenses	352	3,6 %
Repairs and maintenance	193	2,0 %
Extraordinary expenses	156	1,6 %
Financial costs	92	0,9 %
Others costs - civil services	70	0,7 %
Income tax (business activity)	55	0,5 %
Utilities (energy) consumption	37	0,4 %
Entertainment expenses	32	0,2 %
Others	10	0 %
<b>TOTAL</b>	<b>9759</b>	<b>100 %</b>

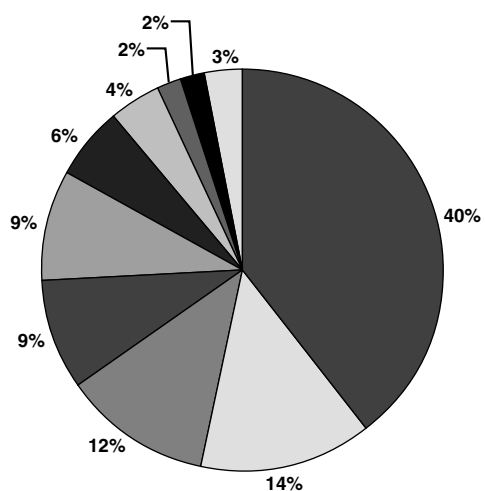
In 2000, standard services were provided to clients free of charge. The clients shared the costs of the publishing of the magazine Rolnička, week-long rehabilitation courses and above-standard functional assessments and consultations. Many of our clients became sponsors of the GUIDANCE programme and thus helpers to themselves. The difference found between the costs and revenues is the profit from secondary business activities and contributions that the Association for Early Intervention received in 2000. These funds are intended to cover the costs in 2001.

## Structure of Revenues



<i>State subsidies</i>	50%
<i>Contributions from local administration</i>	10%
<i>Contributions from Czech foundations</i>	10%
<i>Contributions from firms</i>	9%
<i>Contributions from Phare</i>	7%
<i>Contributions from foreign foundations</i>	4%
<i>Contributions from individuals</i>	2%
<i>Revenues from secondary bus. act</i>	3%
<i>Others</i>	4%

## Structure of Costs



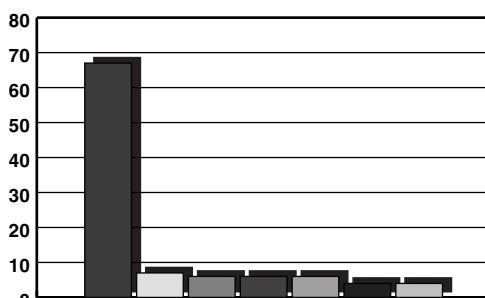
<i>Wages and Salaries</i>	40%
<i>Services</i>	14%
<i>Mandatory social and health insurance</i>	12%
<i>Material consumption (incl. petrol)</i>	9%
<i>Depreciation</i>	9%
<i>Costs related to Lien project supervisors</i>	6%
<i>Travel expenses</i>	4%
<i>Repairs and maintenance</i>	2%
<i>Extraordinary expenses</i>	2%
<i>Others</i>	3%

# Financing of projects implemented in 2000

## 1) Providing early intervention to children with serious visual impairment and to children with multiple disabilities

budget 5949 thous. CZK

Share in financing of the project	%
Subsidy from Ministry of Health	67
grant Phare Tacis Lien EC	7
foreign foundations (Perkins, Civilia)	6
Czech foundations (Nova, Euronisa, foundation fund Brno)	6
self-administration authorities	6
contributions from firms	4
others	4

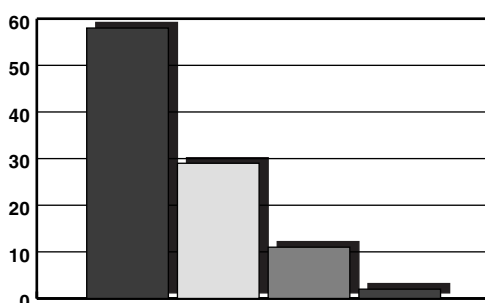


- Ministry of Health
- Phare Tacis LIEN
- foreign foundations
- Czech foundations
- self-administration authorities
- contributions from firms
- others

## 2) Financing of home-based services of the Early Intervention Centres

budget 1547 thous. CZK

Share in financing of the project	%
Ministry of Work and Social Affairs	58
self-administration authorities	29
NROS contributions	11
contributions from firms	2

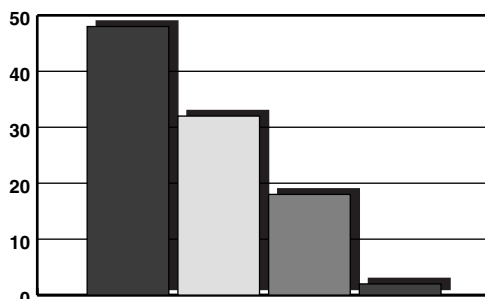


- Ministry of Work and Social Affairs
- self-administration authorities
- NROS contributions
- contributions from firms

## 3) Rehabilitation courses for families

budget 363 thous. CZK

Share in financing of the project	%
contribution from Royal Netherlands Embassy	48
revenues from clients	32
self-administration authorities	18
contributions from foundations and firms	2



- contribution from Royal Netherlands Embassy
- revenues from clients
- self-administration authorities
- contributions from foundations and firms

## 4) Education

### A) Costs related to Lien/Tacis supervisor

budget 596 thous. CZK

Share in financing of the project	%
contribution from EU	100

### B) Course for Early Intervention consultant - accredited by MŠMT

budget 46 thous CZK

Share in financing of the project	%
revenues from the course participants' fees	100

### C) Course of vision stimulation - accredited by MŠMT

budget 17 thous CZK

Share in financing of the project	%
revenues from the course participants' fees	12
contribution from Phare/Tacis EU	88

### D) Set for educating pre-school children with visual impairment and multiple disabilities

budget 70 thous. CZK

Share in financing of the project	%
State subsidies from MŠMT	57
contributions from firms	43

# Acknowledgements

We would like to thank all those who took part in financing early intervention services for our clients:

## A) Central financial sources

<i>State Administration:</i> Ministry of Health (MZ) Ministry of Work and Social Affairs (MPSV) Ministry of Education (MŠMT)	Nadace pro rozvoj občanské společnosti  <i>firms:</i> Allianz Pojišťovna Bitservis, s.r.o. Časopis Ano Johnson&Johnson, Janssen-Cilag Medesa, spol. s r.o. Press Servis, s.r.o. Primapol, spol. s r.o.	<i>individual donors:</i> Aleš Cvrček Jiří Celar Michal Dušek Michal Voráček Richard Tůma  <i>EU:</i> EC program Phare Lien/Tacis Royal Netherlands Embassy
<i>foundations:</i> Hilton / Perkins International - USA Nadace Charty 77 Nadace Nova Nadace pro obnovu a rozvoj		

## B) Regional financial sources

### České Budějovice

<i>local and municipal authorities:</i> České Budějovice Dolní Dvořiště Jindřichův Hradec Sušice Tábor Veselí nad Lužnicí	Auto VP Barvy Bondex Coca-Cola Elektrocentrum KBT s.r.o. V.Mýto Epilepsia Jihočeské mlékárny Madeta Maso-uzeniny V.Jakš Pneuservis Dvořák Soma, s.r.o. Lanškroun Stepa, s.r.o. Stepok, s.r.o. Truhlářství Pavel Švarz	UPC Česká republika, a.s. W.I.P. Žužo-Lido Zdeněk Candra  <i>foundations and non-profit organisations:</i> Rotary Club České Budějovice Mateřské centrum Máj  <i>individual donors:</i> Petra Kapounová Timur Gvenetadze
<i>firms:</i> A+B Vladimír Prokeš		

### Brno

<i>local and municipal authorities:</i> Brno Brno-Kohoutovice	Libor Stuchlý, Autodoprava Pizzeria Milano Servis Centrum s.r.o. UPC Česká republika, a.s.  <i>foundations and non-profit organisations:</i>	Nadační fond „Občané Brnu střed“  <i>individual donors:</i> David Miroslav Wnuk Petr
<i>firms:</i>		

### Liberec

<i>local and municipal authorities:</i> Bílá Třemešná Česká Kamenice Česká Lípa Frýdlant Hrádek Jablonec nad Nisou	Liberec Malá Skála Police Smržovka Výchová nad Jizerou <i>firms:</i> Czech Forwarding Agency s.r.o. Ornex spol.s r.o. Severočeská energetika,a.s.	<i>foundations and non-profit organisations:</i> fond SWIF - Phare EU Nadace Euronisa  <i>individual donors:</i> Kateřina Součková
--	---	---

### Olomouc

<i>local and municipal authorities:</i> Černá Voda Dřevnovice Lešany Litomyšl Mikulovice Náklo	Olomouc Prostějov Přerov Trnávka Veselíčko Vsetín Zlín Zubří Žalkovice	<i>firms:</i> UPC Česká republika, a.s.  <i>foundations and non-profit organisations:</i> Nadace Dětský mozek
--	--	---

## **Ostrava**

### *local and municipal authorities:*

Ostrava Frýdek-Místek  
Frýdlant nad Ostravicí  
Hař  
Haviřov  
Hradec nad Moravicí  
Karviná  
Kbyslavice

Kopřivnice  
Krnov  
Milíkov  
Moravská Ostrava a Přívoz  
Mosty u Jablunkova  
Opava  
Ostrava  
Ostrava-Jih  
Ostrava-Poruba  
Petrovice u Karviné

Příbor  
Staré Město

### *firms:*

UPC Česká republika, a.s.

### *foundations and non-profit organisations:*

Rotary Club Ostrava

## **Praha**

### *local and municipals authorities:*

Dobronín  
Holice v Čechách  
Hradec Králové  
Cheb  
Choceň  
Chomutov  
Jirkov  
Libiř  
Mariánské Lázně  
Mělník  
Most  
Nechanice  
Praha  
Proseč  
Veltrusy

### *firms:*

Era, a.s. Pardubice  
Equitech, s.r.o.

Hasičská vzájemná pojišťovna  
Milan Mašek-Instalatérské potřeby  
Jan Pondělník Pekařství a cukrářství  
Mafra, a.s.  
Medesa, spol.s r.o.  
Mero ČR, a.s.  
Primapol, spol. s r.o.  
Procter&Gamble  
Siemens Building Technologies s.r.o.  
Softmail, s.r.o.  
Středočeská plynárenská, a.s.  
Sudop Praha, a.s.  
Sunega-elektro, s.r.o.  
Sunya-hračky, s.r.o.  
Thomashilfen s.r.o.  
Thomson Media CZ  
Victoria Pojišťovna

### *foundations and non-profit organisations:*

Česká rada humanitárních organizací  
NROS - Pomozte dětem

The International Womens Association of Prague And The Diplomatic Ladies Association of Prague

### *individual donors:*

Božena Pýchová  
Csonkovi  
Daniela Lombinová  
Ivanka Palusková  
Iveta Vyšejnová  
Jana Blažková  
Jan Roth  
Jindřich Bass  
Martin Vidlák  
Radka Vlčková  
Rodina Šindelářova  
Rodina Zahálkova  
Zora Havlíčková



### **Association for Early Intervention**

Haštalská 27  
110 00 Praha 1  
Czech Republic  
tel.: (+42) 02/24 82 68 60, 24 82 68 57  
fax: (+42) 02/24 82 68 58  
website: <http://ms.anet.cz/~srpcuns>  
Follow the latest information and Rolnička magazine on our website!

e-mail: [ranapece@braillnet.cz](mailto:ranapece@braillnet.cz)

Bank details:  
ČSOB a.s., Praha 1  
Account No.: 27-200744223/0300

Published by Association for Early Intervention, May 2001  
Design by Lenka Blažejová  
Printed by PRESS SERVIS, s.r.o., Jilovská 1167/71A, Praha 4

